

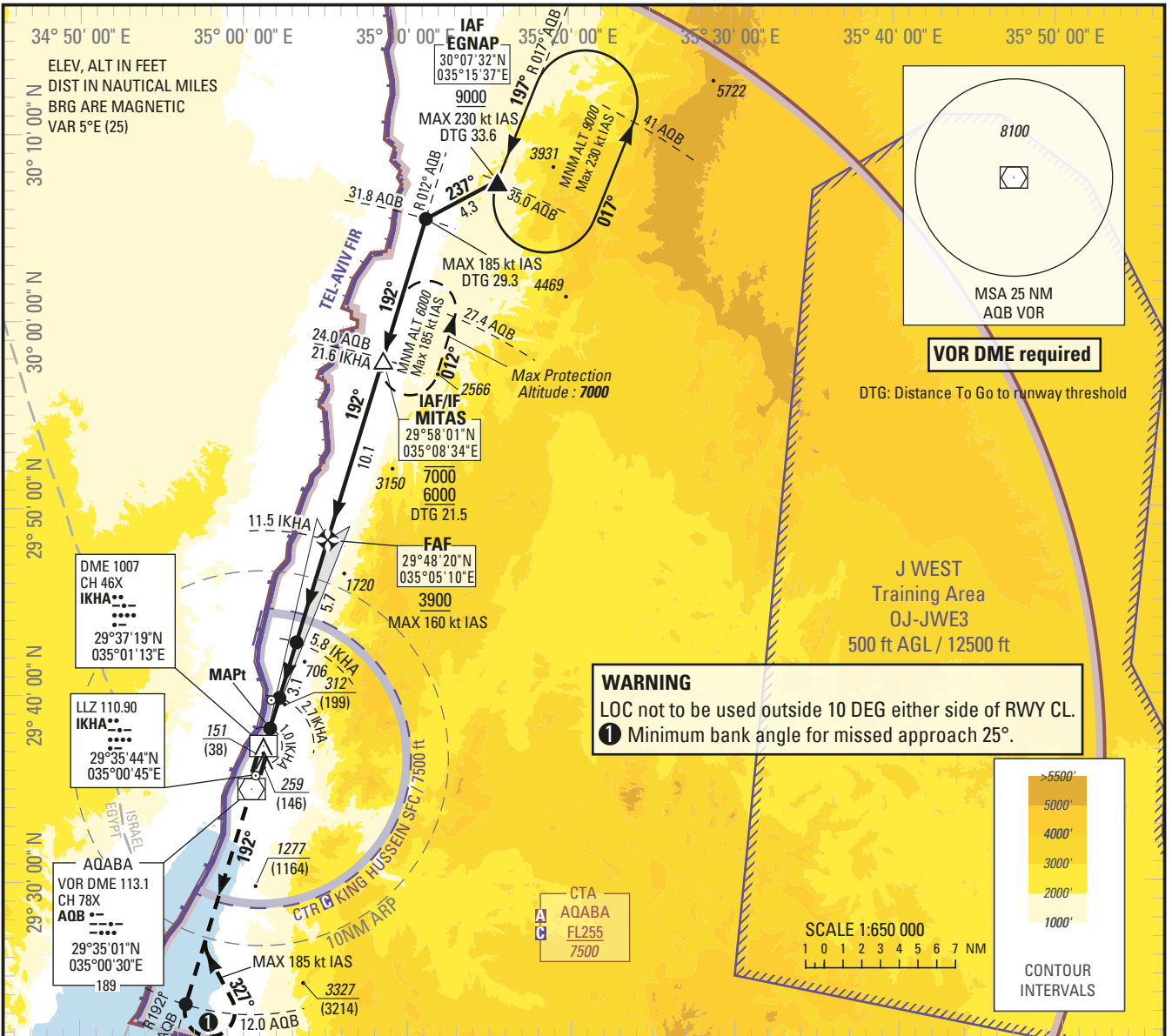
**INSTRUMENT
APPROACH
CHART — ICAO**

AERODROME ELEV 173 ft
HEIGHTS RELATED TO
THR RWY 19 — ELEV 113 ft

King Hussein Tower 119.2
Aqaba Sector 132.425

AQABA/King Hussein Intl. (OJAQ)

ILS Y RWY 19



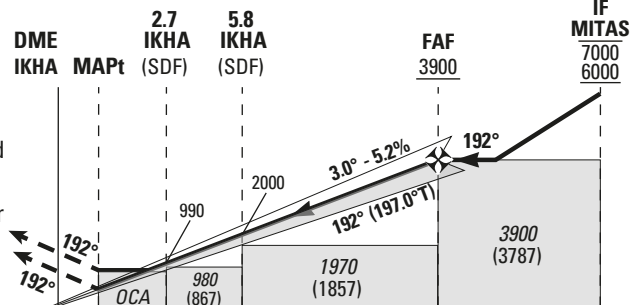
NM to DME	IKHA	2	3	4	5	6	7	8	9	10	11
ALTITUDE		760	1080	1410	1730	2060	2390	2720	3060	3390	3730

TRANSITION ALTITUDE 13000
TRANSITION LEVEL FL 150

MISSED APPROACH:

Climb on course **192°M**. At **12.0 AQB**, turn **left** heading **327°** to intercept and follow **R 192° AQB** (012°M) inbound to **AQB**; then intercept and follow **R 012° AQB** (012°M) climbing to **6000** (5887) to enter in the holding (MAX **185 kt IAS**) or follow ATC instructions.
Remain within **AMMAN FIR**.

ILS RDH 54
THR ELEV 113



NM to IKHA DME
NM to THR RWY 19

0 1.0 2.7 5.8 11.5 21.6
0 0.9 2.6 5.7 11.4 21.5

		(1) OCA (H)				(1) For additional minima, see OJAQ AD 2.24.8-X4.								
Straight-in Approach	Cat I 2.5%	320 (210)	330 (220)	830 (720)	840 (730)	GS	kt	70	85	100	115	130	145	160
	GP INOP 2.5%	560 (450)			920 (810)		FAF-MAPT 10.5 NM	min:s	9:00	7:25	6:18	5:29	4:51	4:21
Circling		Not authorized				Rate of descent	ft/min	370	450	530	610	690	770	850

CHANGE: New IFF procedure

INSTRUCTIONS

AQABA/King Hussein Intl. (OJAQ)

ILS Y RWY 19 Minima

Minima ILS CAT I

The standard ILS CAT I Minima below are determined for ACFT performing an ILS CAT I procedure which are able to maintain a climbing slope greater than 2.5% during a missed APCH.

<i>Slope in missed approach</i>	<i>OCA (H)</i>			
	A	B	C	D/DL
3.0%	320 (200)		470 (360)	480 (370)
4.0%	-		320 (200)	

Minima GP INOP

The standard GP INOP Minima below are determined for ACFT performing a GP INOP procedure which are able to maintain a climbing slope greater than 2.5% during a missed APCH.

<i>Slope in missed approach</i>	<i>OCA (H)</i>			
	A	B	C	D
3.0%	-		560 (450)	

CHANGE: New IFP procedure

